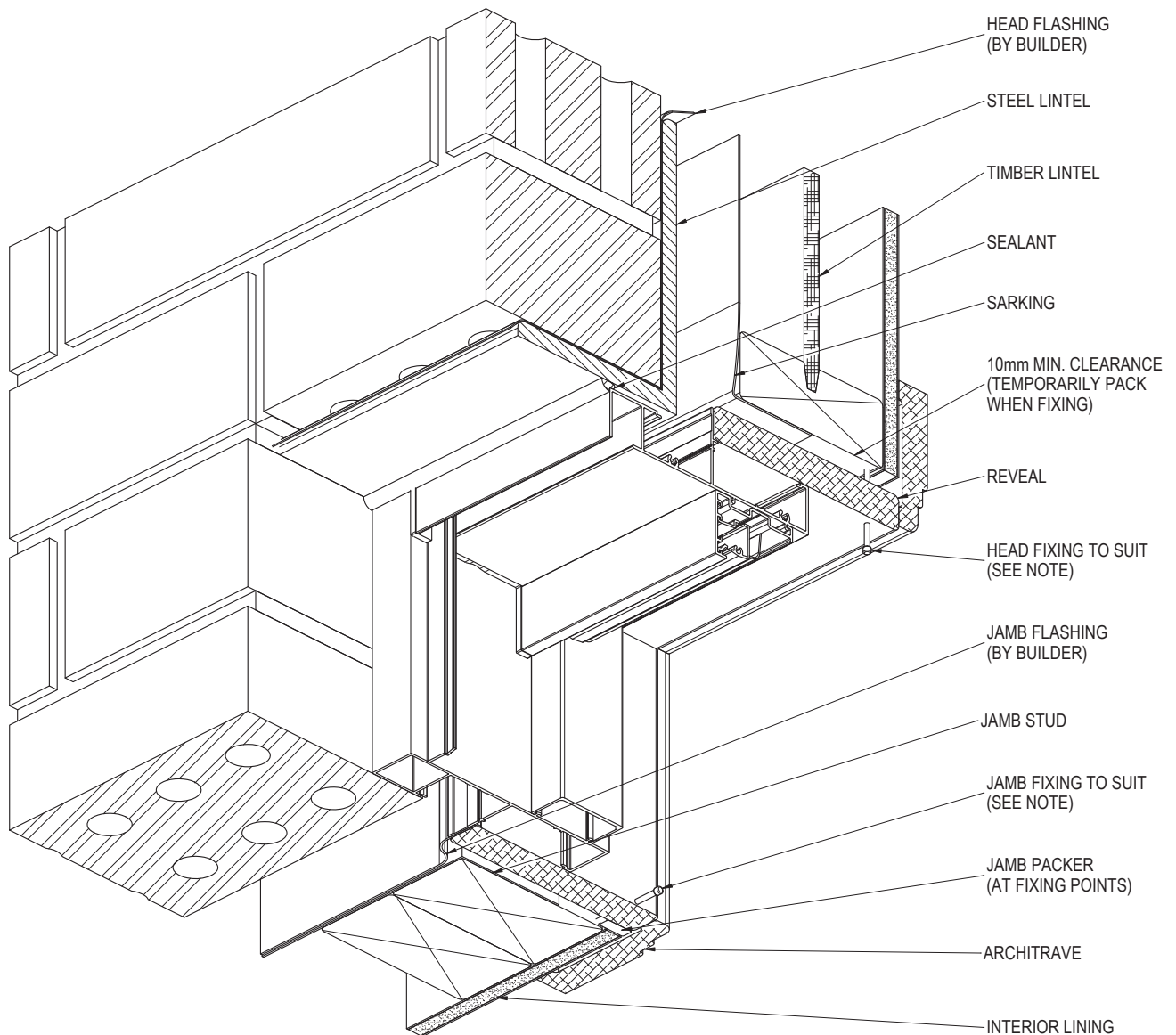


# Signature Louvre Window (125mm)

## Installation Details

BRICK VENEER CONSTRUCTION - HEAD & JAMB DETAIL



NOTE:  
FOR SITE CLASSIFICATIONS OF UP TO AND INCLUDING 'N6' OR SIMILAR, FIXINGS ARE TO BE AT 450mm CENTRE MAXIMUM, FOR SITUATIONS IN EXCESS OF THIS THE FIXINGS ARE TO BE AT 300mm CENTRES MAXIMUM. FIXING SIZE TO BE EQUIVALENT TO A  $\phi$  2.2mm STEEL NAIL MINIMUM.

PRODUCT NO: SIG 125 LV  
DRAWING NO: SIG-LV-02-01  
DRAWN: DJH

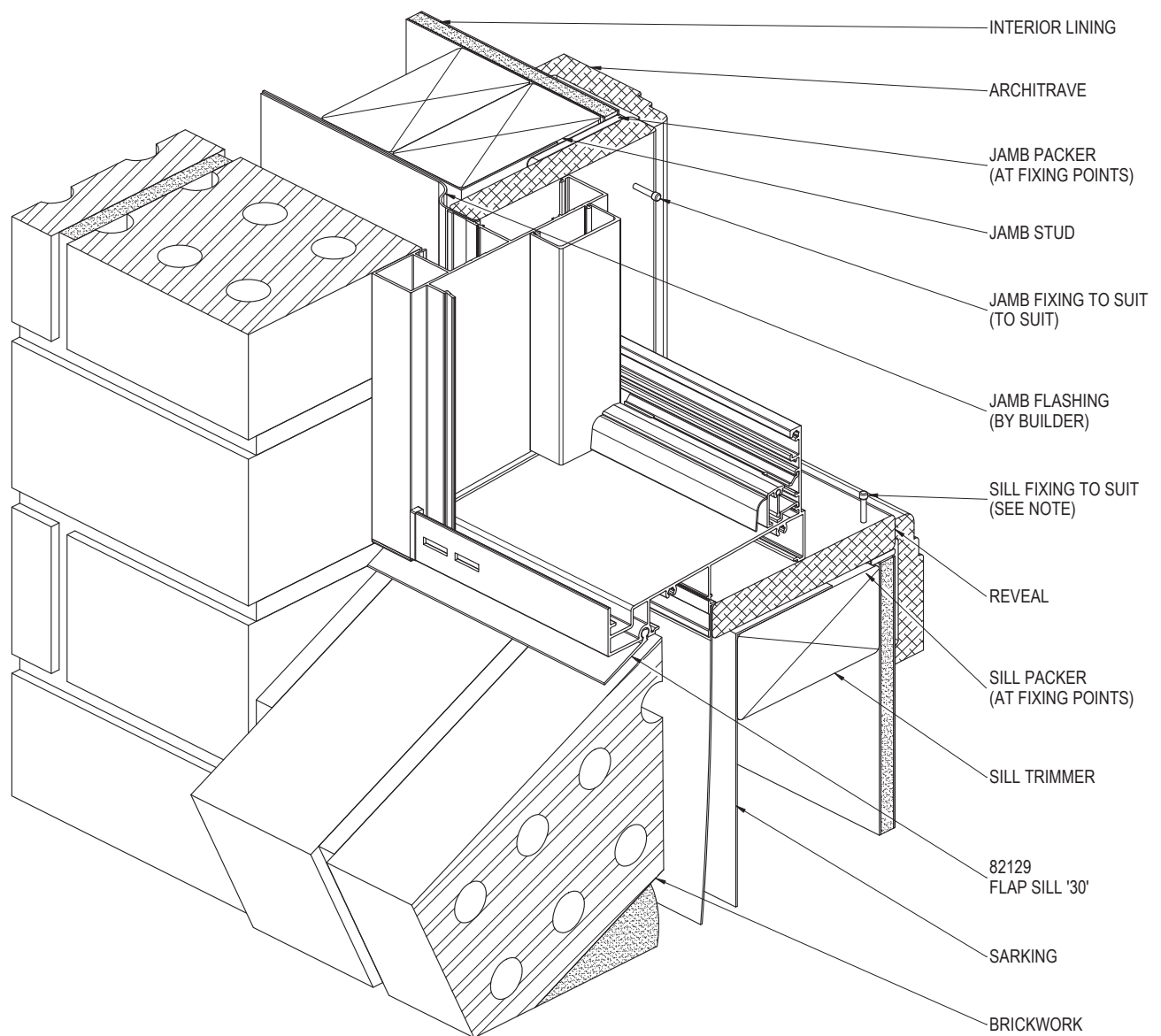
DATE: 13/12/11

ISSUE: A

SCALE: 1 : 3



BRICK VENEER CONSTRUCTION - SILL & JAMB DETAIL

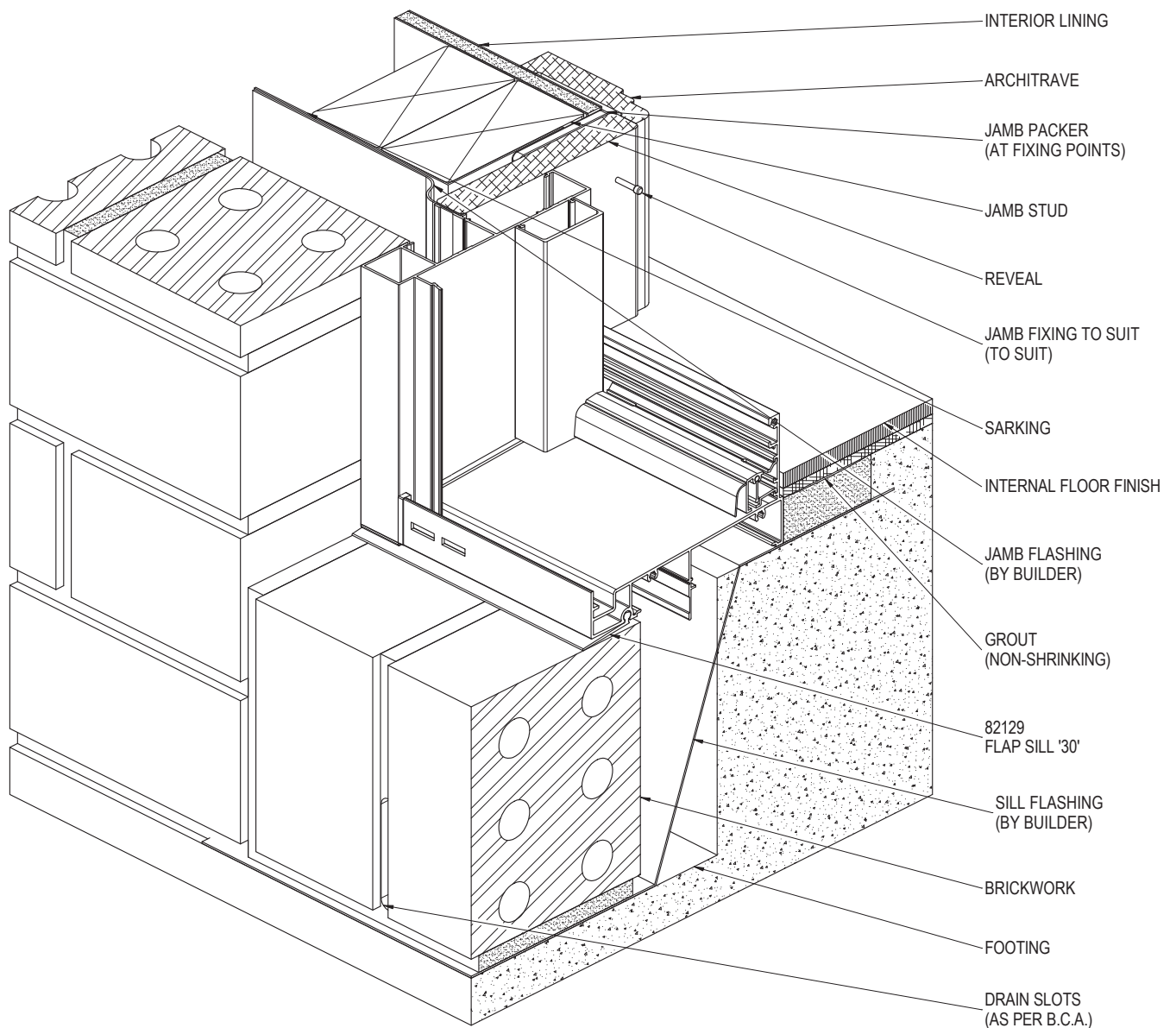


NOTE:  
FOR SITE CLASSIFICATIONS OF UP TO AND INCLUDING 'N6' OR SIMILAR, FIXINGS ARE TO BE AT 450mm CENTRE MAXIMUM, FOR SITUATIONS IN EXCESS OF THIS THE FIXINGS ARE TO BE AT 300mm CENTRES MAXIMUM. FIXING SIZE TO BE EQUIVALENT TO A  $\phi$  2.2mm STEEL NAIL MINIMUM.

PRODUCT NO: SIG 125 LV  
DRAWING NO: SIG-LV-02-02  
DRAWN: DJH

DATE: 13/12/11  
ISSUE: A  
SCALE: 1 : 3

BRICK VENEER CONSTRUCTION - SILL & JAMB DETAIL AT FLOOR LEVEL

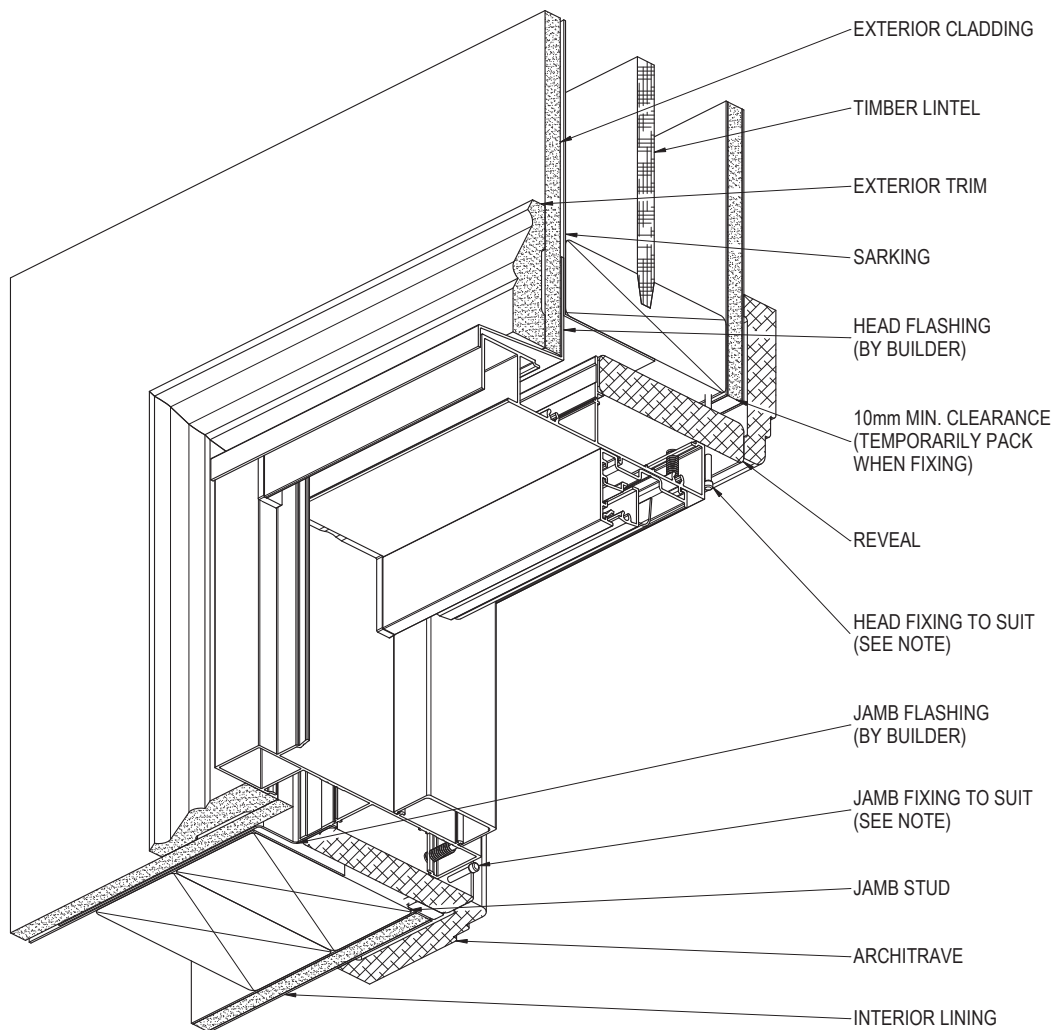


NOTE:  
FOR SITE CLASSIFICATIONS OF UP TO AND INCLUDING 'N6' OR SIMILAR, FIXINGS ARE TO BE AT 450mm CENTRE MAXIMUM, FOR SITUATIONS IN EXCESS OF THIS THE FIXINGS ARE TO BE AT 300mm CENTRES MAXIMUM. FIXING SIZE TO BE EQUIVALENT TO A  $\phi$  2.2mm STEEL NAIL MINIMUM.

PRODUCT NO: SIG 125 LV  
DRAWING NO: SIG-LV-02-03  
DRAWN: DJH

DATE: 13/12/11  
ISSUE: A  
SCALE: 1 : 3

CLADDING CONSTRUCTION - HEAD & JAMB DETAIL



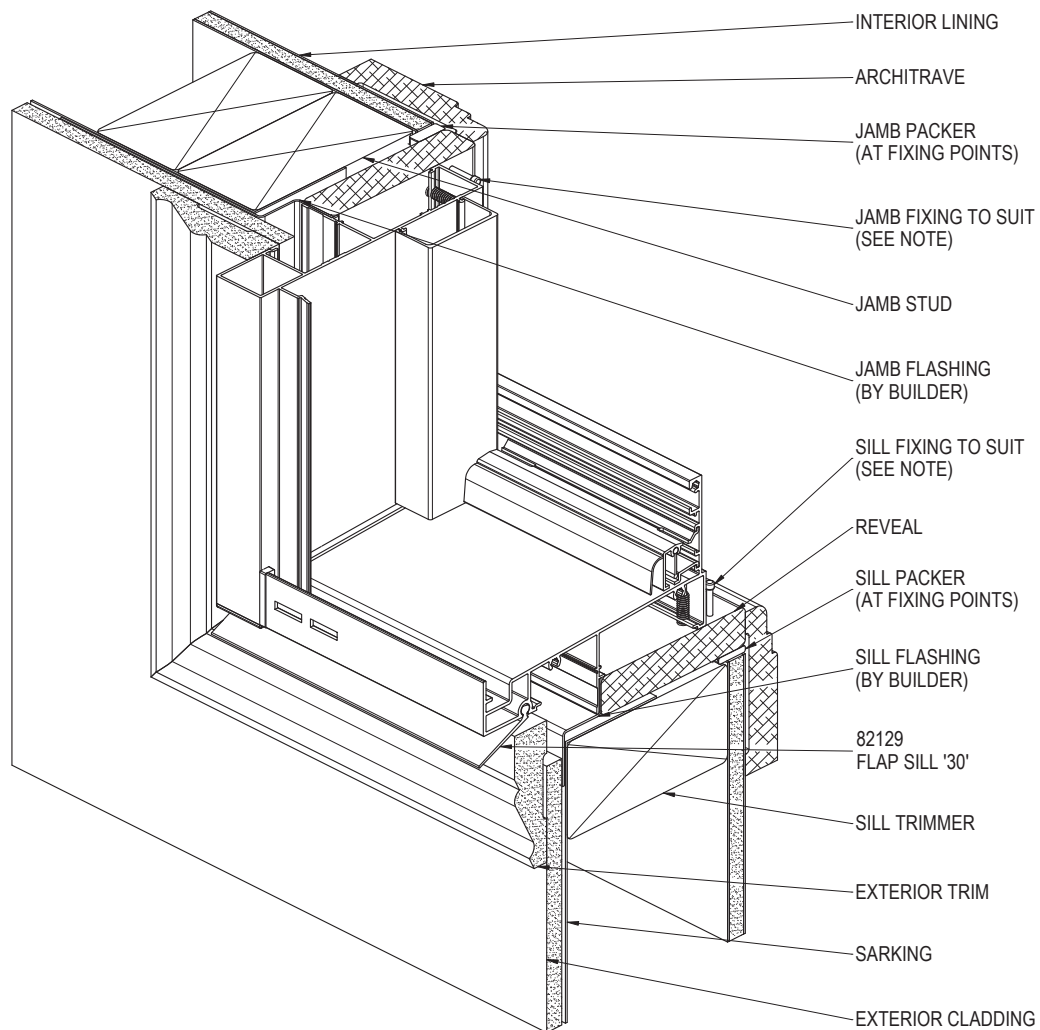
NOTE:  
FOR SITE CLASSIFICATIONS OF UP TO AND INCLUDING 'N6' OR SIMILAR, FIXINGS ARE TO BE AT 450mm CENTRE MAXIMUM, FOR SITUATIONS IN EXCESS OF THIS THE FIXINGS ARE TO BE AT 300mm CENTRES MAXIMUM. FIXING SIZE TO BE EQUIVALENT TO A  $\varnothing$  2.2mm STEEL NAIL MINIMUM.

PRODUCT NO: SIG 125 LV  
DRAWING NO: SIG-LV-02-04  
DRAWN: DJH

DATE: 13/12/11  
ISSUE: A  
SCALE: 1 : 3



## CLADDING CONSTRUCTION - SILL & JAMB DETAIL



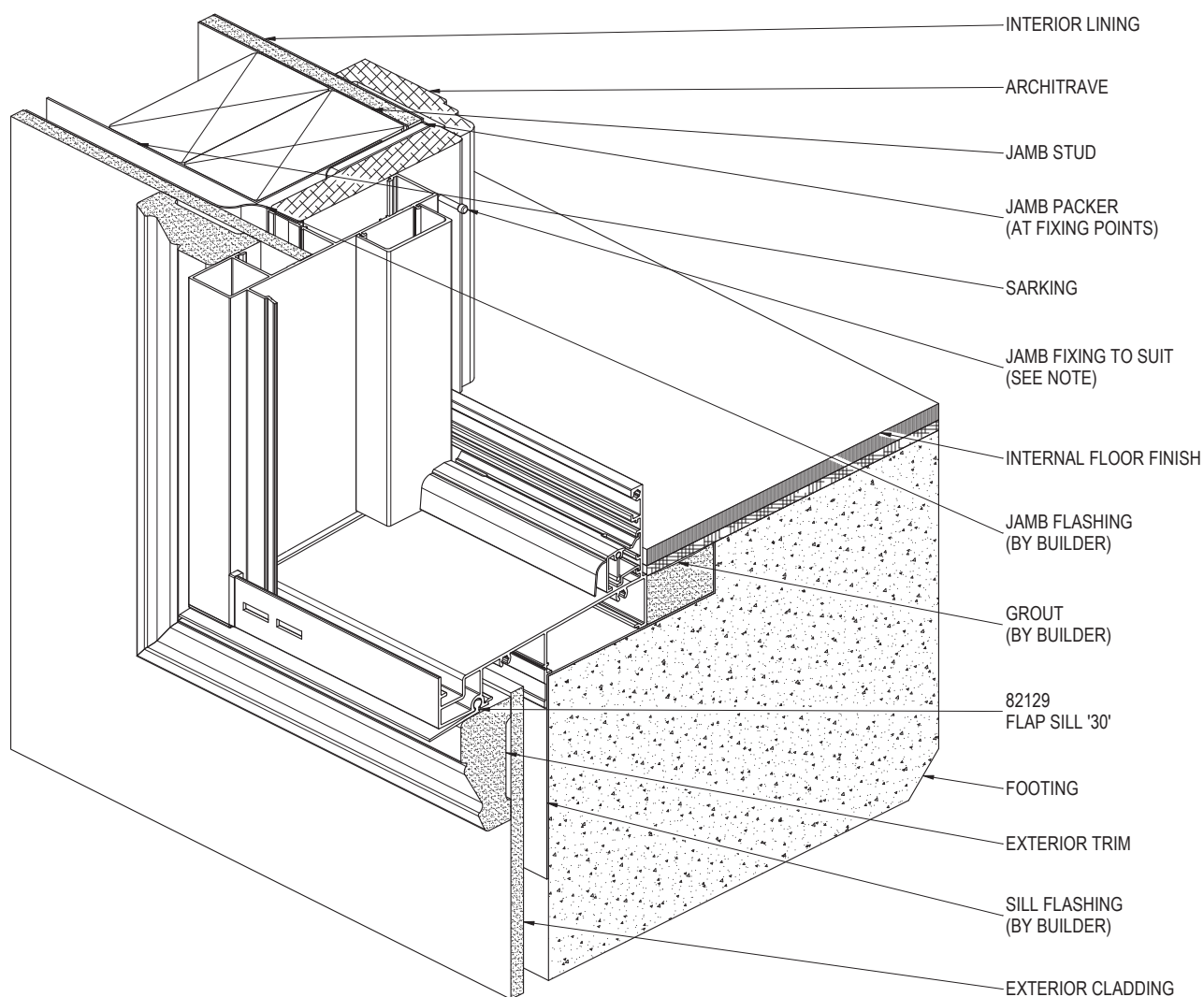
NOTE:  
FOR SITE CLASSIFICATIONS OF UP TO AND INCLUDING 'N6' OR SIMILAR, FIXINGS ARE TO BE AT 450mm CENTRE MAXIMUM, FOR SITUATIONS IN EXCESS OF THIS THE FIXINGS ARE TO BE AT 300mm CENTRES MAXIMUM. FIXING SIZE TO BE EQUIVALENT TO A  $\phi 2.2$ mm STEEL NAIL MINIMUM.

PRODUCT NO: SIG 125 LV  
DRAWING NO: SIG-LV-02-05  
DRAWN: DJH

DATE: 13/12/11  
ISSUE: A  
SCALE: 1 : 3



CLADDING CONSTRUCTION - SILL & JAMB DETAIL AT FLOOR LEVEL



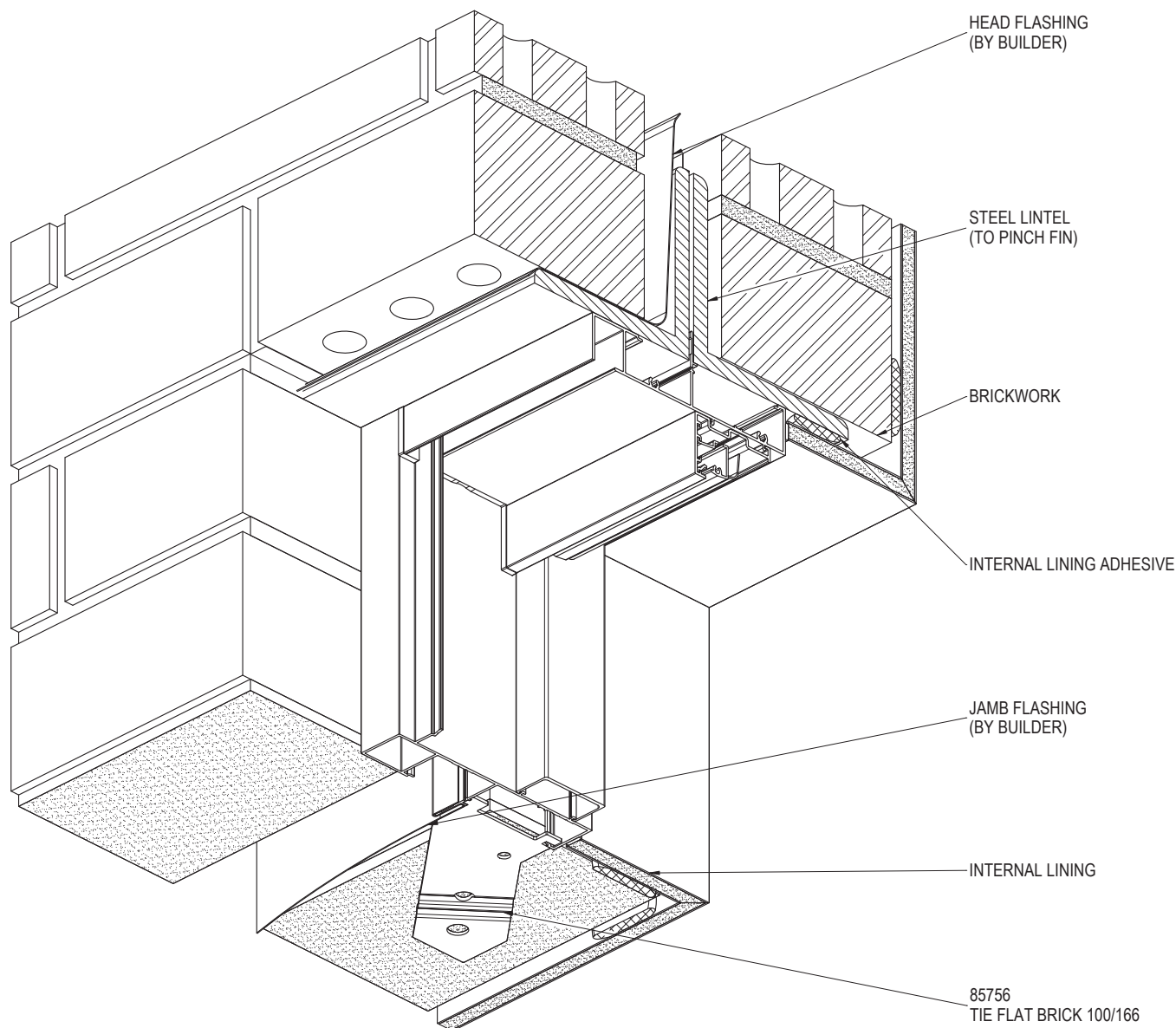
NOTE:  
FOR SITE CLASSIFICATIONS OF UP TO AND INCLUDING 'N6' OR SIMILAR, FIXINGS ARE TO BE AT 450mm CENTRE MAXIMUM, FOR SITUATIONS IN EXCESS OF THIS THE FIXINGS ARE TO BE AT 300mm CENTRES MAXIMUM. FIXING SIZE TO BE EQUIVALENT TO A  $\varnothing$  2.2mm STEEL NAIL MINIMUM.

PRODUCT NO: SIG 125 LV  
DRAWING NO: SIG-LV-02-06  
DRAWN: DJH

DATE: 13/12/11  
ISSUE: A  
SCALE: 1 : 3



CAVITY BRICK CONSTRUCTION - HEAD & JAMB DETAIL



NOTE:  
FOR SITE CLASSIFICATIONS OF UP TO AND INCLUDING 'N6' OR SIMILAR, FIXINGS ARE TO BE AT 450mm CENTRE MAXIMUM, FOR SITUATIONS IN EXCESS OF THIS THE FIXINGS ARE TO BE AT 300mm CENTRES MAXIMUM. FIXING SIZE TO BE EQUIVALENT TO A  $\phi 2.2$ mm STEEL NAIL MINIMUM.

PRODUCT NO: SIG 125 LV  
DRAWING NO: SIG-LV-02-07  
DRAWN: DJH

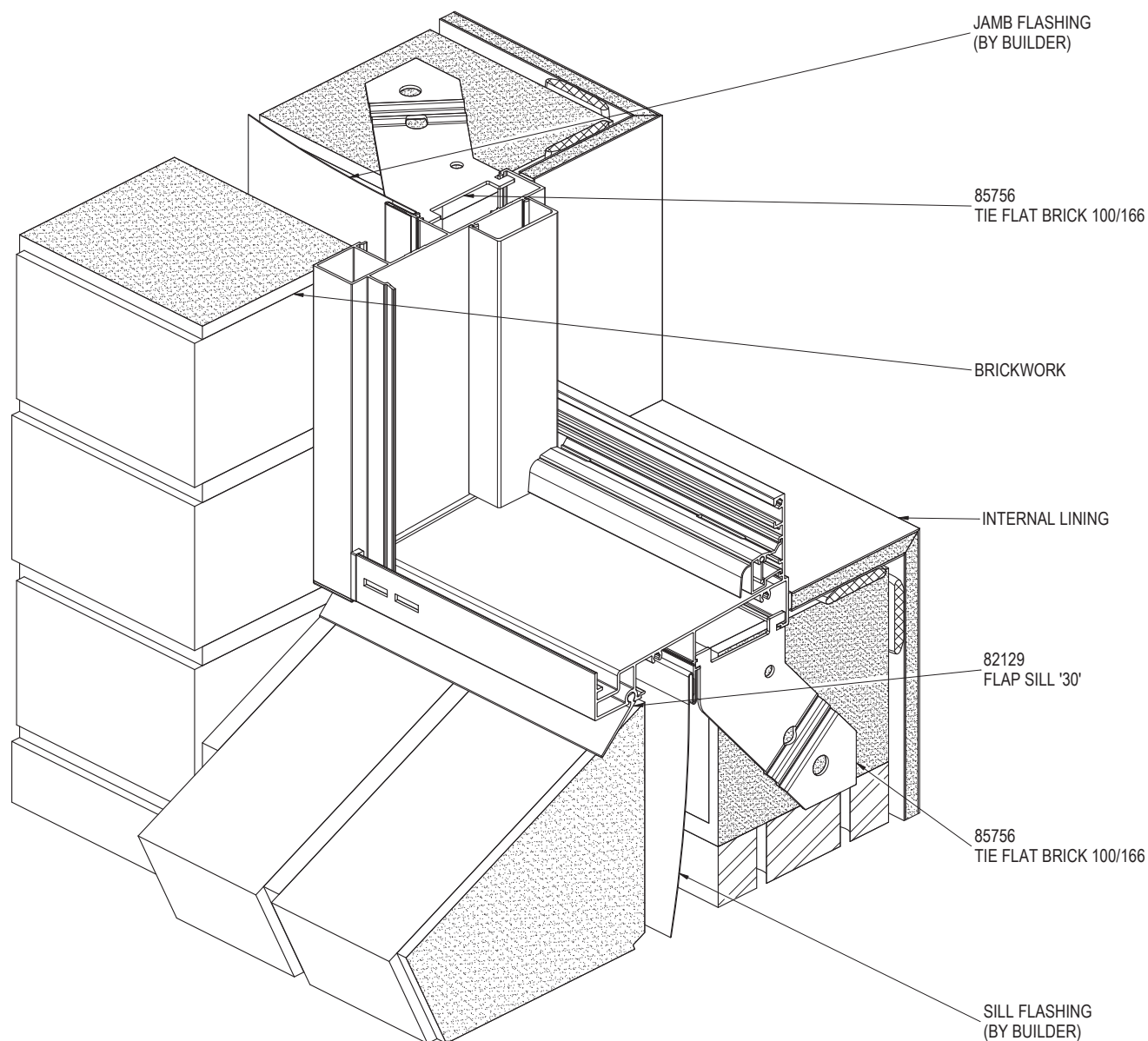
DATE: 13/12/11  
ISSUE: A  
SCALE: 1 : 3



**Bradnam's**  
windows & doors



CAVITY BRICK CONSTRUCTION - SILL & JAMB DETAIL



NOTE:  
FOR SITE CLASSIFICATIONS OF UP TO AND INCLUDING 'N6' OR SIMILAR, FIXINGS ARE TO BE AT 450mm CENTRE MAXIMUM, FOR SITUATIONS IN EXCESS OF THIS THE FIXINGS ARE TO BE AT 300mm CENTRES MAXIMUM. FIXING SIZE TO BE EQUIVALENT TO A  $\varnothing$  2.2mm STEEL NAIL MINIMUM.

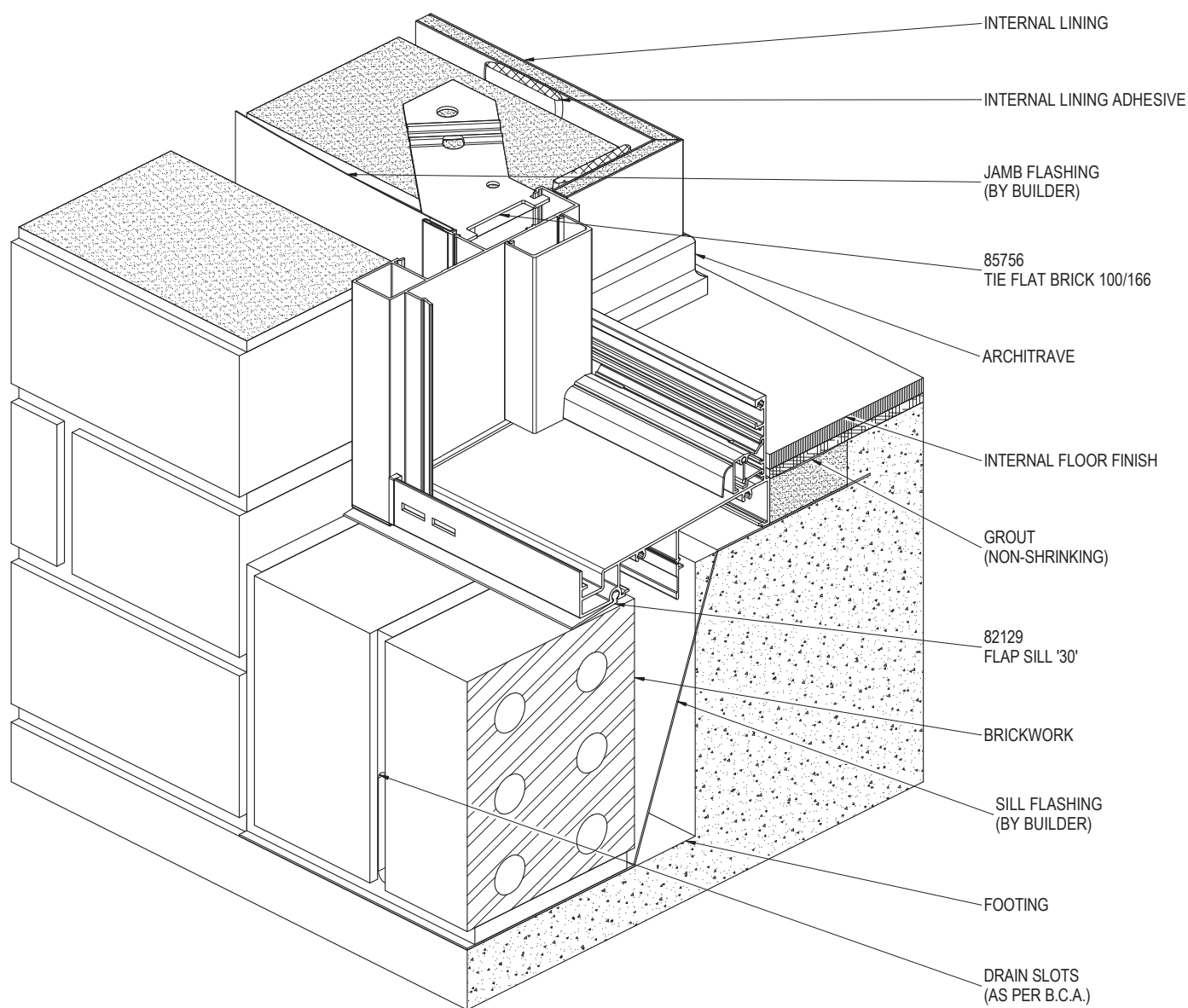
PRODUCT NO: SIG 125 LV  
DRAWING NO: SIG-LV-02-08  
DRAWN: DJH

DATE: 13/12/11  
ISSUE: A  
SCALE: 1 : 3



**Bradnam's**  
windows & doors

CAVITY BRICK CONSTRUCTION - SILL & JAMB DETAIL AT FLOOR LEVEL



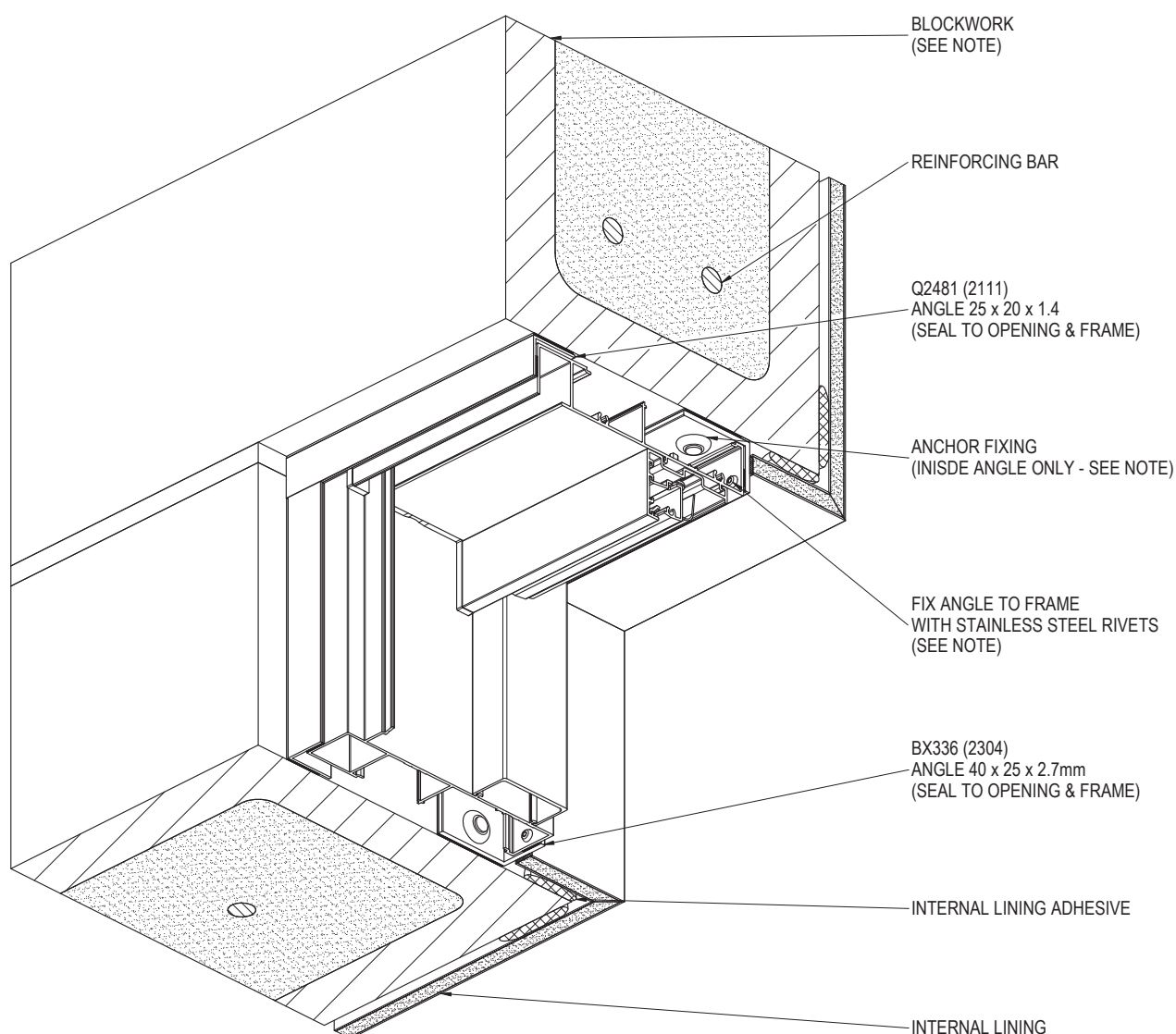
NOTE:  
FOR SITE CLASSIFICATIONS OF UP TO AND INCLUDING 'N6' OR SIMILAR, FIXINGS ARE TO BE AT 450mm CENTRE MAXIMUM, FOR SITUATIONS IN EXCESS OF THIS THE FIXINGS ARE TO BE AT 300mm CENTRES MAXIMUM. FIXING SIZE TO BE EQUIVALENT TO A  $\phi$  2.2mm STEEL NAIL MINIMUM.

PRODUCT NO: SIG 125 LV  
DRAWING NO: SIG-LV-02-09  
DRAWN: DJH

DATE: 07/05/10  
ISSUE: A  
SCALE: 1 : 3



## BLOCKWORK CONSTRUCTION - HEAD & JAMB DETAIL



NOTE:  
SURFACE OF BLOCKS TO WINDOW OPENING MUST BE TANKED WITH A SUITABLE SEALER TO PREVENT INGRESS OF MOISTURE. ENSURE SURFACES TO BE SEALED ARE SOUND, CLEAN, DRY AND FREE FROM ANY CONTAMINANTS BEFORE SEALING.

FOR SITE CLASSIFICATIONS OF UP TO AND INCLUDING 'N6' OR SIMILAR, FIXINGS ARE TO BE AT 450mm CENTRE MAXIMUM, FOR SITUATIONS IN EXCESS OF THIS THE FIXINGS ARE TO BE AT 300mm CENTRES MAXIMUM. FIXING SIZE TO BE EQUIVALENT TO A  $\varnothing 2.2\text{mm}$  STEEL NAIL MINIMUM.

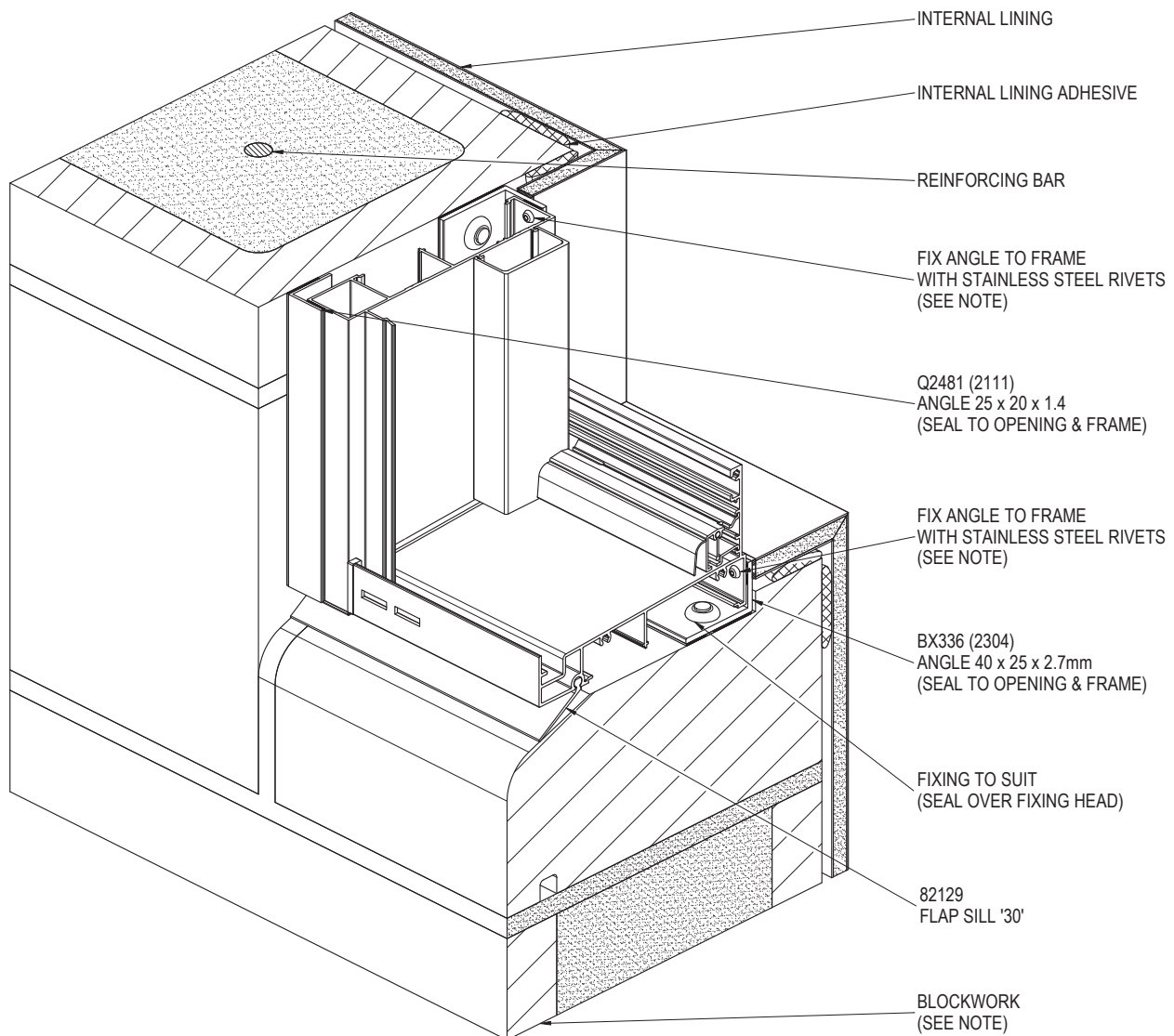
PRODUCT NO: SIG 125 LV  
DRAWING NO: SIG-LV-02-10  
DRAWN: DJH

DATE: 13/12/11  
ISSUE: A  
SCALE: 1 : 3



**Bradnam's**  
windows & doors

BLOCKWORK CONSTRUCTION - SILL & JAMB DETAIL



NOTE:

SURFACE OF BLOCKS TO WINDOW OPENING MUST BE TANKED WITH A SUITABLE SEALER TO PREVENT INGRESS OF MOISTURE. ENSURE SURFACES TO BE SEALED ARE SOUND, CLEAN, DRY AND FREE FROM ANY CONTAMINANTS BEFORE SEALING.

FOR SITE CLASSIFICATIONS OF UP TO AND INCLUDING 'N6' OR SIMILAR, FIXINGS ARE TO BE AT 450mm CENTRE MAXIMUM, FOR SITUATIONS IN EXCESS OF THIS THE FIXINGS ARE TO BE AT 300mm CENTRES MAXIMUM. FIXING SIZE TO BE EQUIVALENT TO A  $\phi$  2.2mm STEEL NAIL MINIMUM.

PRODUCT NO: SIG 125 LV

DRAWING NO: SIG-LV-02-11

DRAWN: DJH

DATE: 13/12/11

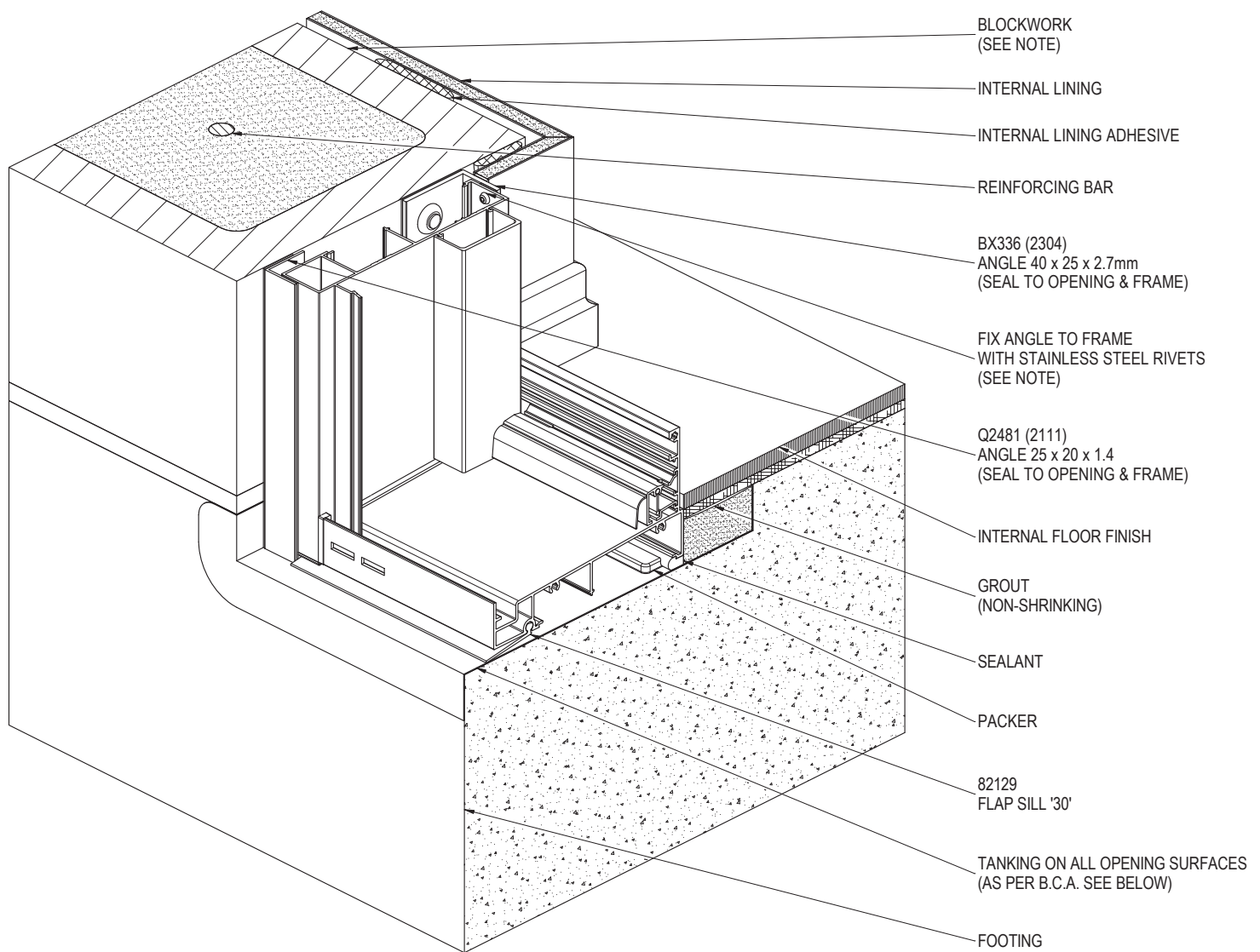
ISSUE: A

SCALE: 1 : 3



**Bradnam's**  
windows & doors

BLOCKWORK CONSTRUCTION - SILL & JAMB DETAIL AT FLOOR LEVEL



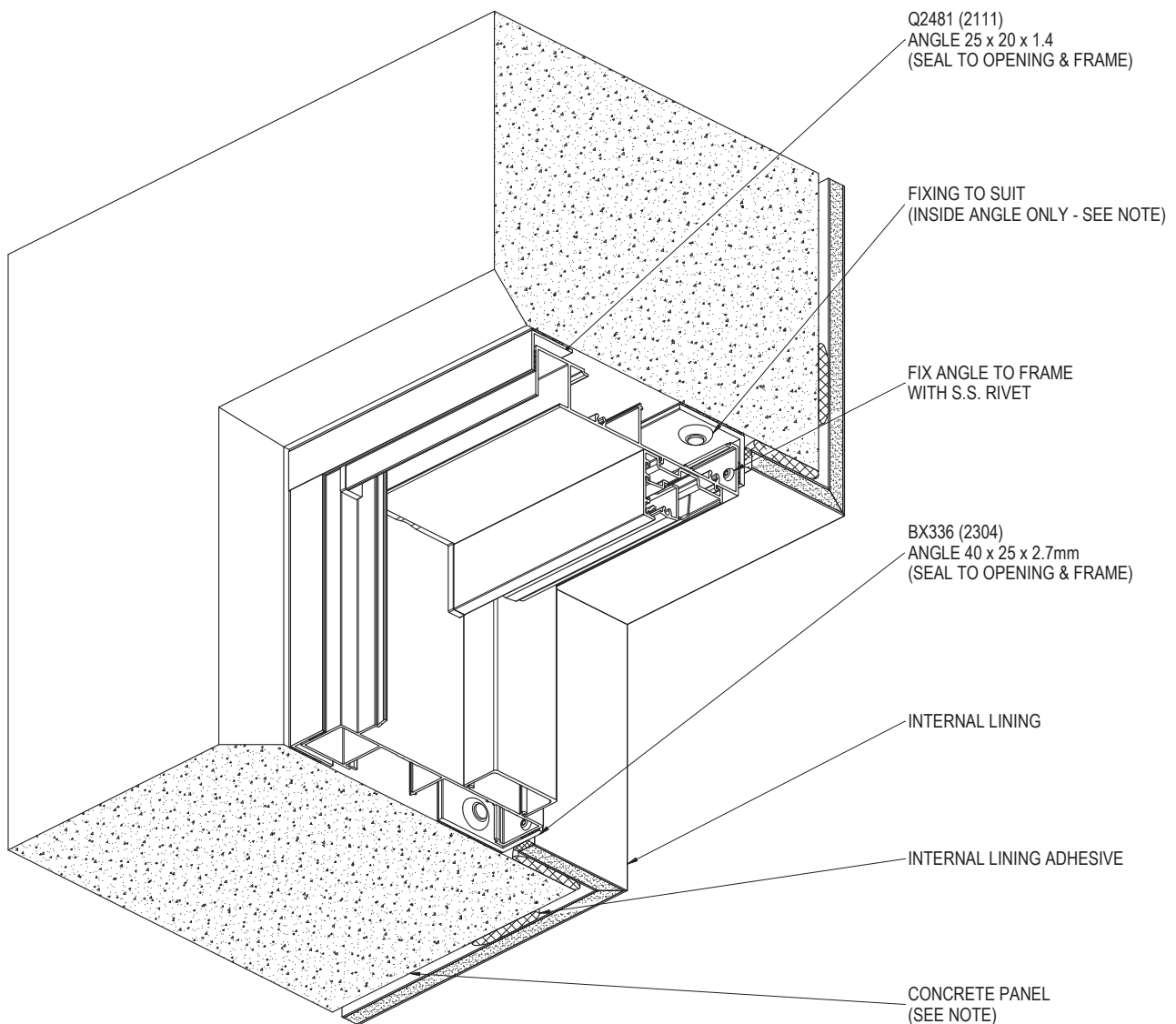
NOTE:  
SURFACE OF BLOCKS TO WINDOW OPENING MUST BE TANKED WITH A SUITABLE SEALER TO PREVENT INGRESS OF MOISTURE. ENSURE SURFACES TO BE SEALED ARE SOUND, CLEAN, DRY AND FREE FROM ANY CONTAMINANTS BEFORE SEALING.

FOR SITE CLASSIFICATIONS OF UP TO AND INCLUDING 'N6' OR SIMILAR, FIXINGS ARE TO BE AT 450mm CENTRE MAXIMUM, FOR SITUATIONS IN EXCESS OF THIS THE FIXINGS ARE TO BE AT 300mm CENTRES MAXIMUM. FIXING SIZE TO BE EQUIVALENT TO A  $\phi$  2.2mm STEEL NAIL MINIMUM.

PRODUCT NO: SIG 125 LV  
DRAWING NO: SIG-LV-02-12  
DRAWN: DJH

DATE: 13/12/11  
ISSUE: A  
SCALE: 1 : 3

CONCRETE CONSTRUCTION - HEAD & JAMB DETAIL



NOTE:

SURFACE OF CONCRETE TO WINDOW OPENING MUST BE TANKED WITH A SUITABLE SEALER TO PREVENT INGRESS OF MOISTURE. ENSURE SURFACES TO BE SEALED ARE SOUND, CLEAN, DRY AND FREE FROM ANY CONTAMINANTS BEFORE SEALING.

FIXING TYPES & CENTRES TO BE PROJECT SPECIFIC, REFER TO SPECIFICATION AND/OR ENGINEER.

PRODUCT NO: SIG 125 LV  
DRAWING NO: SIG-LV-02-13  
DRAWN: DJH

DATE: 22/12/11

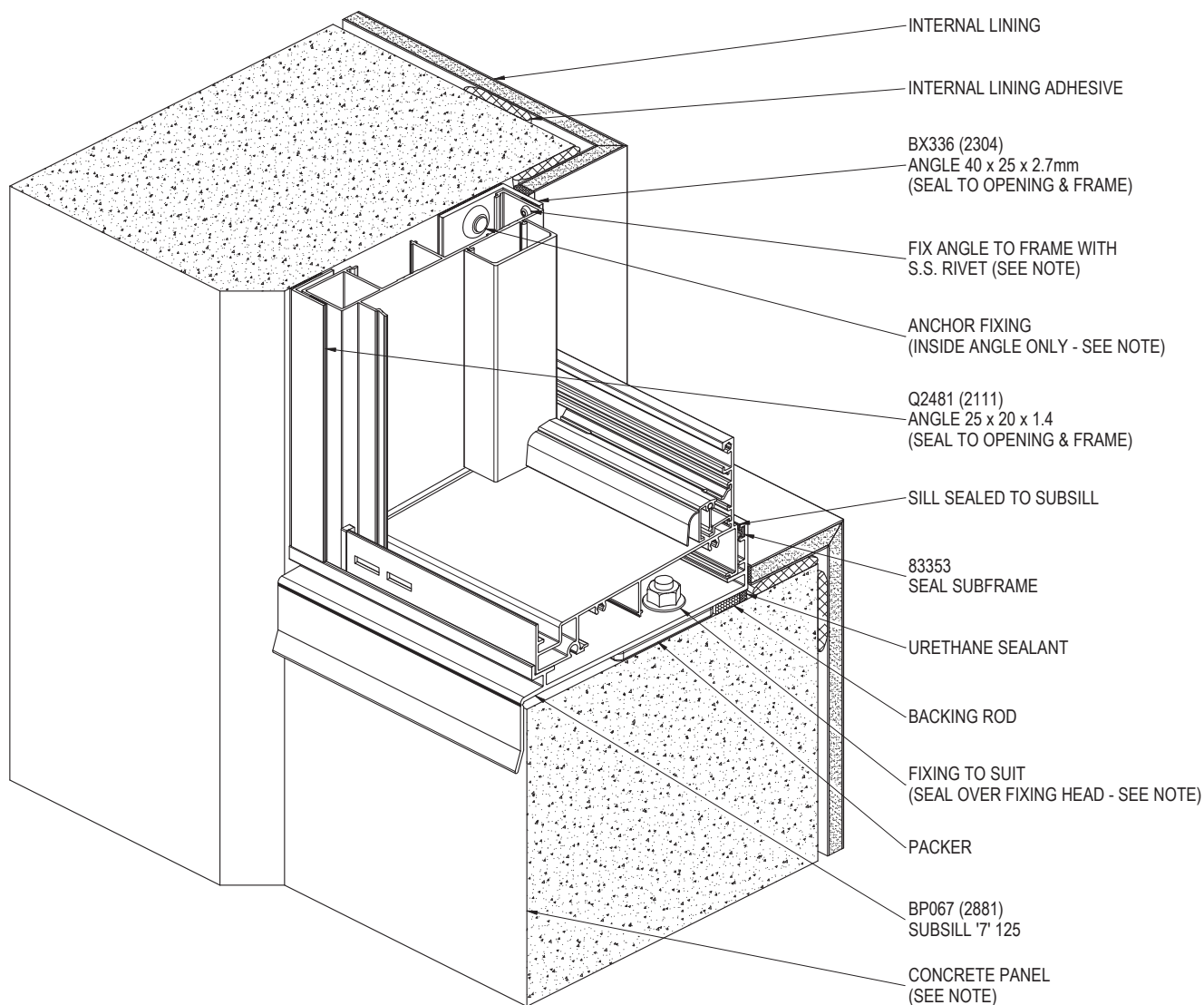
ISSUE: A

SCALE: 1 : 3





## CONCRETE CONSTRUCTION - SILL & JAMB DETAIL



NOTE:  
SURFACE OF CONCRETE TO WINDOW OPENING MUST BE TANKED WITH A SUITABLE SEALER TO PREVENT INGRESS OF MOISTURE. ENSURE SURFACES TO BE SEALED ARE SOUND, CLEAN, DRY AND FREE FROM ANY CONTAMINANTS BEFORE SEALING.

FIXING TYPES & CENTRES TO BE PROJECT SPECIFIC, REFER TO SPECIFICATION AND/OR ENGINEER.

PRODUCT NO: SIG 125 LV  
DRAWING NO: SIG-LV-02-14  
DRAWN: DJH

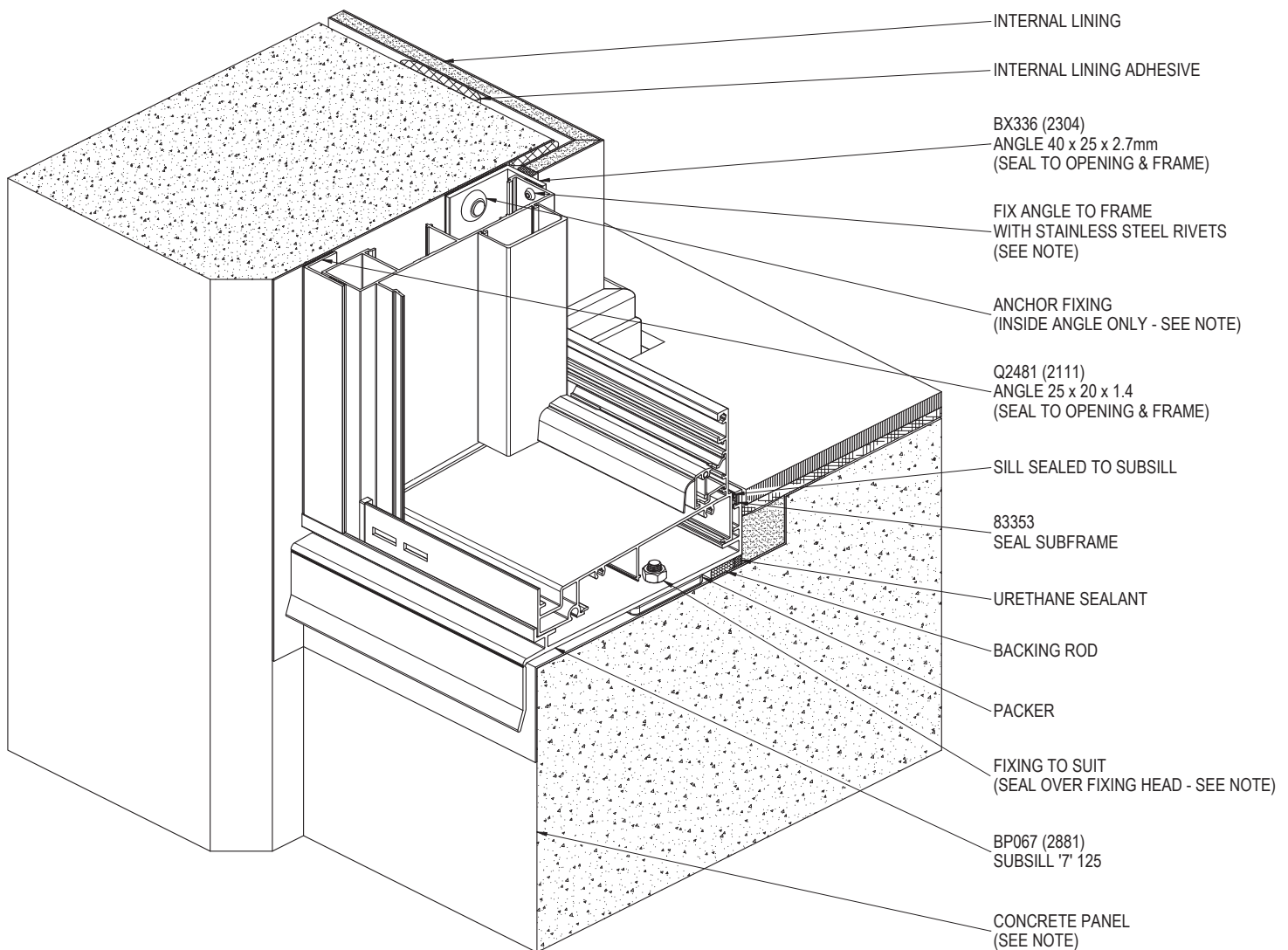
DATE: 22/12/11

ISSUE: A

SCALE: 1 : 3



## CONCRETE CONSTRUCTION - SILL & JAMB DETAIL AT FLOOR LEVEL



**NOTE:**

SURFACE OF CONCRETE TO WINDOW OPENING MUST BE TANKED WITH A SUITABLE SEALER TO PREVENT INGRESS OF MOISTURE. ENSURE SURFACES TO BE SEALED ARE SOUND, CLEAN, DRY AND FREE FROM ANY CONTAMINANTS BEFORE SEALING.

FIXING TYPES & CENTRES TO BE PROJECT SPECIFIC, REFER TO SPECIFICATION AND/OR ENGINEER.

PRODUCT NO: SIG 125 LV  
DRAWING NO: SIG-LV-02-15  
DRAWN: DJH

DATE: 22/12/11

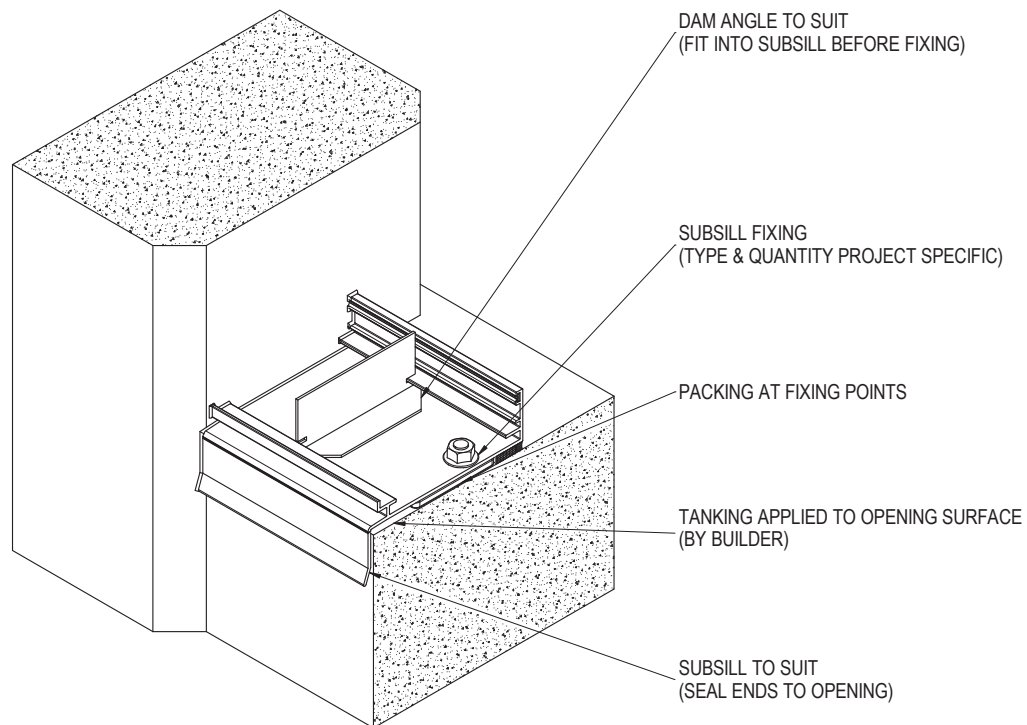
ISSUE: A

SCALE: 1 : 3

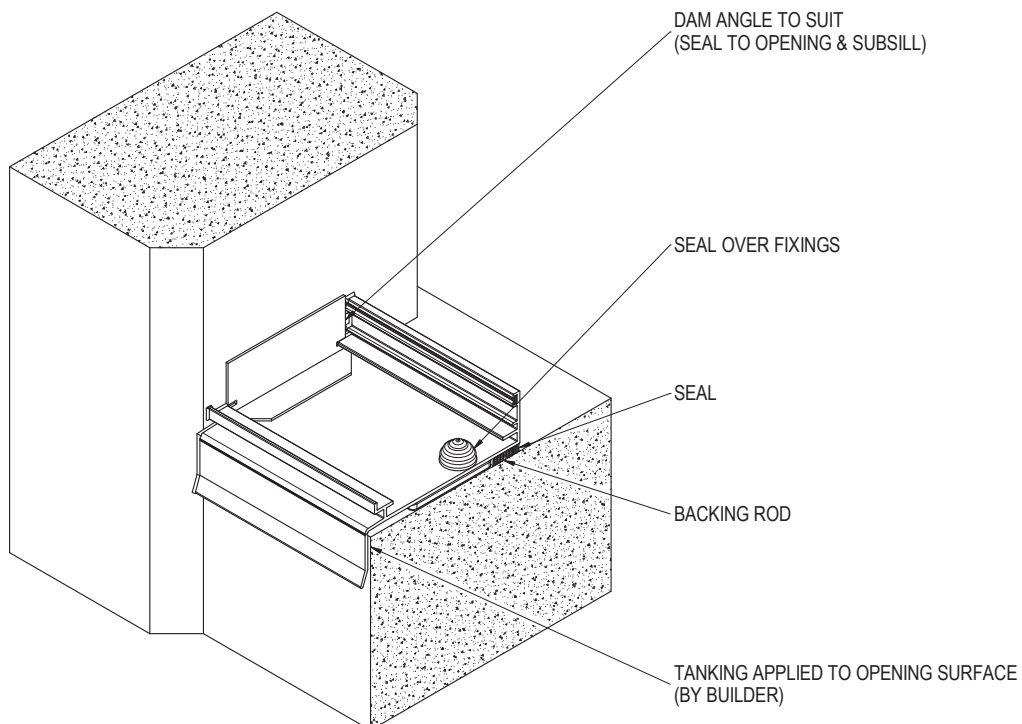




## SUBSILL DAM ANGLE INSTALLATION



1. INSTALL SUBSILL INTO OPENING WITH DAM ANGLE FITTED. PACK SUBSILL LEVEL THEN FIX TO STRUCTURE. SEAL SUBSILL ENDS TO STRUCTURE.

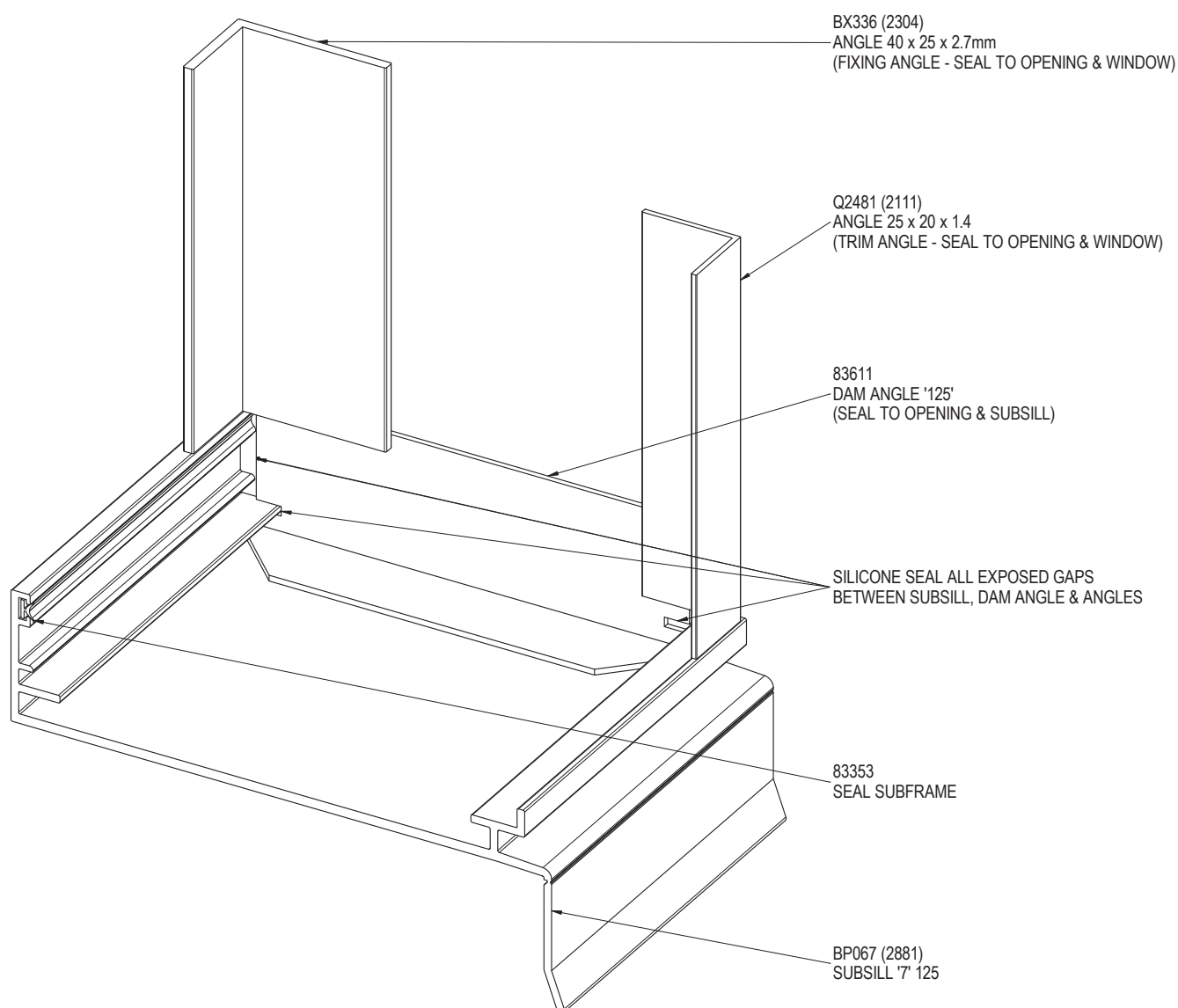


2. APPLY SEALANT TO VERTICAL FACE OF DAM ANGLE AND ALSO TO THE FLOOR OF THE SUBSILL. POSITION DAM ANGLE AGAINST STRUCTURE. SEAL ALL JOINTS BETWEEN ANGLE AND SUBSILL. SEAL ALL JOINTS BETWEEN ANGLE AND SUBSILL. SEAL OVER FIXINGS AND UNDER SUB SILL TO STRUCTURE.

PRODUCT NO: SIG 125 LV  
DRAWING NO: SIG-LV-02-16  
DRAWN: DJH

DATE: 23/12/11  
ISSUE: A  
SCALE: 1 : 4

SUBSILL DAM ANGLE INSTALLATION WITH THE FIXING & TRIM ANGLES



PRODUCT NO: SIG 125 LV  
DRAWING NO: SIG-LV-02-17  
DRAWN: DJH

DATE: 22/12/11  
ISSUE: A  
SCALE: 1 : 1.5